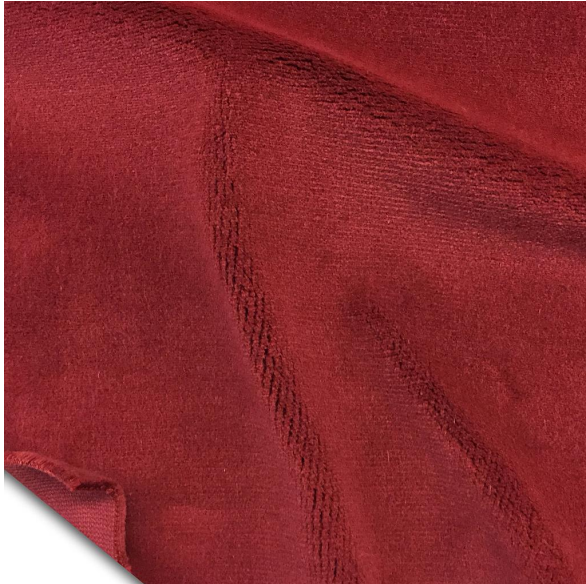




# FABRIC SPECIFICATION SHEET



## 54" Terciopelo Magic 32 oz. FR (Plum)

#0027-000065

Yardas por Rollo / Bulto: 50 yardas (+/-)

Ancho: 54" (4'6" - 137 cm)

Disponibilidad: Rollo completo o más

Peso por yarda lineal: 32oz (907g)

Composición: 100% algodón

Tipo de antifiama: FR - Ignífugo

Test antifiama: California Title 19

## Terciopelo De Algodón Ultra-Pesado

El terciopelo 100% de algodón más pesado del mercado. Esta tela combina una pila extra larga con una textura lujosa que proporciona un aspecto mate rico, una opacidad total y una absorción de sonido superior. El terciopelo ignífugo Magic es una alternativa más gruesa y pesada que el terciopelo Memorable.

Disponible por yarda en color negro. Otros colores disponibles en incrementos de rollo completo.

**NOTA:** Sujeto a decoloración si se expone directamente a la luz solar.

Esta tela también está clasificada por sus propiedades acústicas:

Coefficiente de reducción de ruido NRC: 1.05 \*

Absorción de sonido promedio SAA: 1.04 \*

\*Drapeado con pliegues al 100%, pelo hacia abajo.

El Velour Memorable cumple con los requisitos mínimos de resistencia a las llamas establecidos por estos ensayos:

- NFPA 701 – Small Scale
- NFPA 701 – Test Method#1

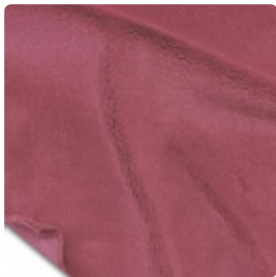


S&K Theatrical Draperies  
7313 Varna Avenue  
North Hollywood CA 91605  
United States

True custom solutions since 1965

- California Title 19
- Canadian ULC S-109
- British Standard C-1410
- ASTM E-84

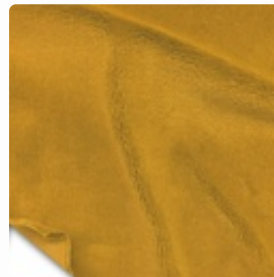
## FABRIC COLOR TABLE



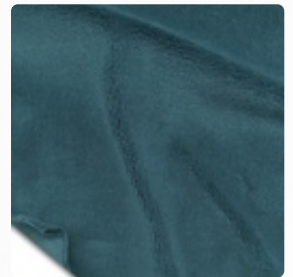
Rosa Americano  
#0027-000034



Aqua  
#0027-000035



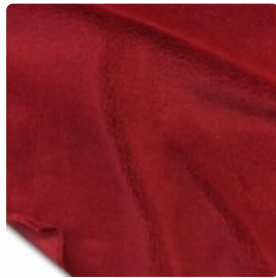
Brandy  
#0027-000037



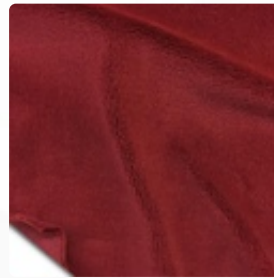
Azul Cadete  
#0027-000039



Gamuza  
#0027-000040



Cereza  
#0027-000041



Ladrillo Colonial  
#0027-000042



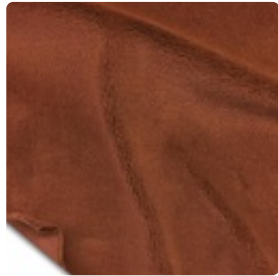
Copen Blue  
#0027-000043

Office hours: Mon thru Friday from 8am to 4:30pm PST

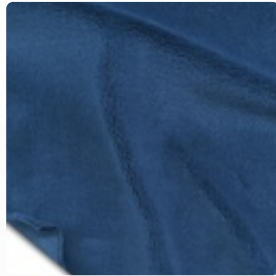


S&K Theatrical Draperies  
7313 Varna Avenue  
North Hollywood CA 91605  
United States

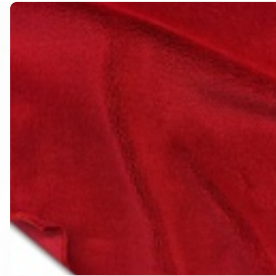
True custom solutions since 1965



Cobre  
#0027-000044



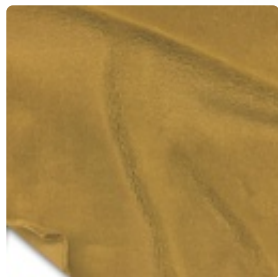
Cornflower  
#0027-000045



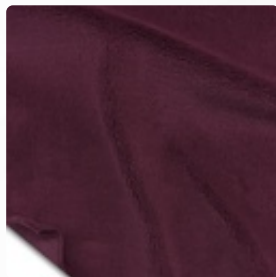
Crimson  
#0027-000046



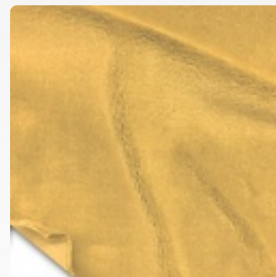
Delft Blue  
#0027-000047



Doeskin  
#0027-000048



Berenjena  
#0027-000049



Oro  
#0027-000050



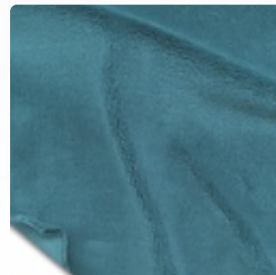
Verde  
#0027-000051



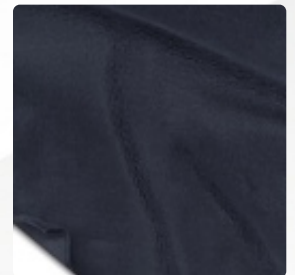
Hunter  
#0027-000052



Hyacinth  
#0027-000053



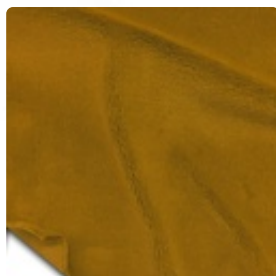
Azul Hielo  
#0027-000054



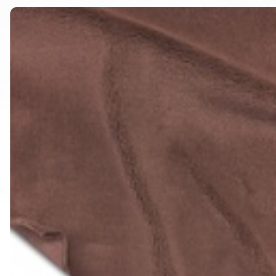
Azul Tinta  
#0027-000055



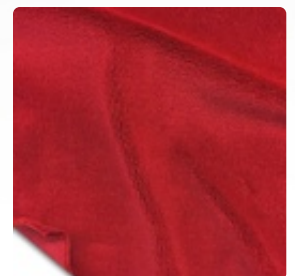
Old Jade  
#0027-000056



Maíz  
#0027-000057



Moleskin  
#0027-000059



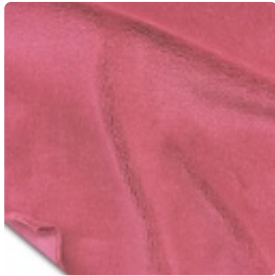
Persimmon  
#0027-000062

Office hours: Mon thru Friday from 8am to 4:30pm PST

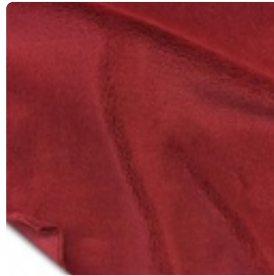


S&K Theatrical Draperies  
7313 Varna Avenue  
North Hollywood CA 91605  
United States

True custom solutions since 1965



Rosado  
#0027-000064



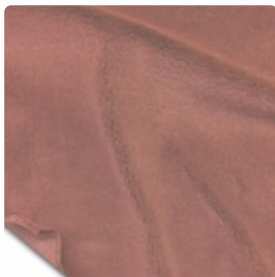
Plum  
#0027-000065



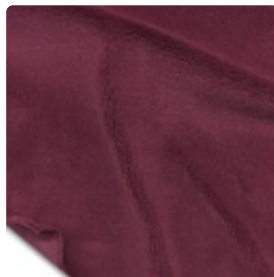
Pussywillow  
#0027-000066



Rojo Real  
#0027-000067



Palo Rosa  
#0027-000068



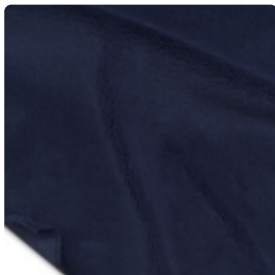
Rubí  
#0027-000069



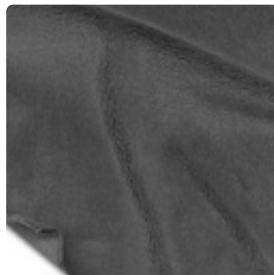
Trigo  
#0027-000070



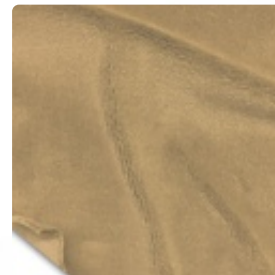
Negro  
#0027-000077



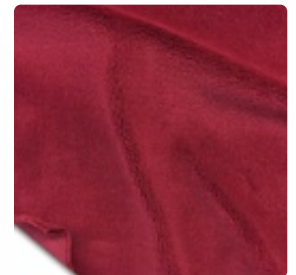
Navy  
#0027-000078



Estaño  
#0027-000079



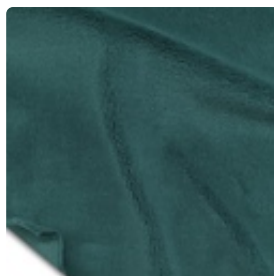
Moca  
#0027-000080



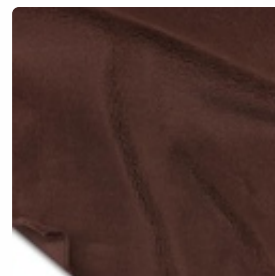
Rojo  
#0027-000081



Blanco  
#0027-000082



Peacock  
#0027-000160



Marrón  
#0027-000161

Office hours: Mon thru Friday from 8am to 4:30pm PST