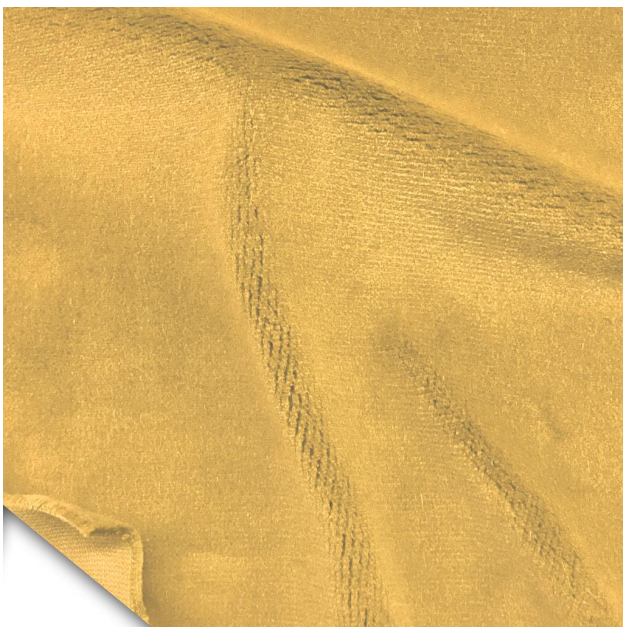




S&K Theatrical Draperies
7313 Varna Avenue
North Hollywood CA 91605
United States

True custom solutions since 1965

ESPECIFICACIONES DE LA TELA



54" Terciopelo Magic 32 oz. FR (Oro)

#100050

Color: Crimson - Azul Tinta - Rojo - Hyacinth - Cornflower - Plum - Old Jade - Persimmon - Aqua - Hunter - Peacock - Azul Hielo - Estaño - Delft Blue - Trigo - Azul Cadete - Negro - Oro - Copen Blue - Pussywillow - Gamuza - Rojo Real - Ladrillo Colonial - Verde - Navy - Blanco - Berenjena - Moca - Rubí - Marrón - Moleskin - Cobre - Cereza - Maíz - Palo Rosa - Rosa Americano - Doeskin - Brandy - Rosado

Yardas por Rollo / Bulto: 50 yardas (+/-)

Ancho: 54" (4'6" - 137 cm)

Disponibilidad: Rollo completo o más

Peso por yarda lineal: 32oz (907g)

Composición: 100% algodón

Tipo de antifiama: FR - Ignífugo

Test antifiama: California Title 19 - Canadian ULC S-109 - NFPA 701 - Small Scale - NFPA 701 - Test Method#1 - British Standard C-14101 - ASTM E-84

Terciopelo De Algodón Ultra-Pesado

El terciopelo 100% de algodón más pesado del mercado. Esta tela combina una pila extra larga con una textura lujosa que proporciona un aspecto mate rico, una opacidad total y una absorción de sonido superior. El terciopelo ignífugo Magic es una alternativa más gruesa y pesada que el terciopelo Memorable.

Stocked in black. Colors sold in full roll increments.

Store Hours: Monday - Friday from 8AM - 4:30PM PST



S&K Theatrical Draperies
7313 Varna Avenue
North Hollywood CA 91605
United States

True custom solutions since 1965

NOTAS IMPORTANTES:

La tela se decolorará con el tiempo si está expuesta a luz solar directa.

Disponible solo en color negro en inventario. Otros colores son bajo pedido especial y se venden únicamente en rollos completos, con un tiempo de entrega estimado de 4-5 semanas.

Esta tela también está clasificada por sus propiedades acústicas:

Coeficiente de reducción de ruido NRC: 1.05 *

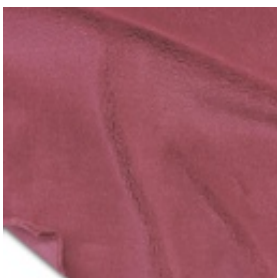
Absorción de sonido promedio SAA: 1.04 *

*Drapeado con pliegues al 100%, pelo hacia abajo.

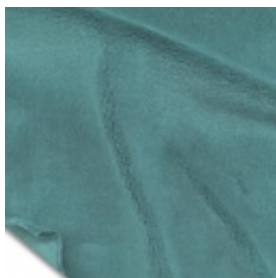
El Velour Memorable cumple con los requisitos mínimos de resistencia a las llamas establecidos por estos ensayos:

- NFPA 701 - Small Scale
- NFPA 701 - Test Method#1
- California Title 19
- Canadian ULC S-109
- British Standard C-1410
- ASTM E-84

COLORES DISPONIBLES



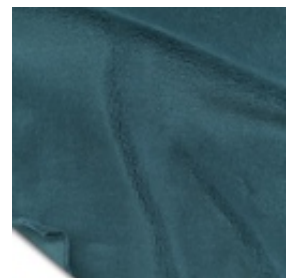
Rosa Americano
#100034



Aqua
#100035



Brandy
#100037



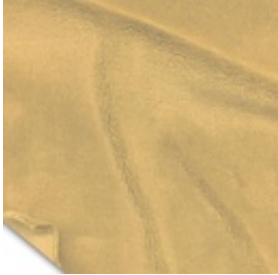
Azul Cadete
#100039

Store Hours: Monday - Friday from 8AM - 4:30PM PST

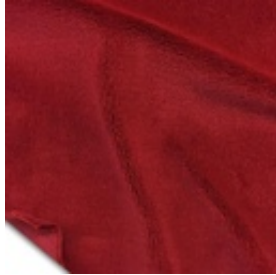


S&K Theatrical Draperies
7313 Varna Avenue
North Hollywood CA 91605
United States

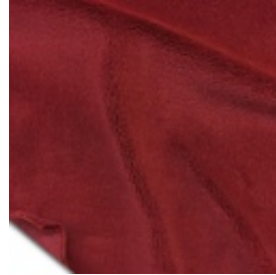
True custom solutions since 1965



Gamuza
#100040



Cereza
#100041



Ladrillo Colonial
#100042



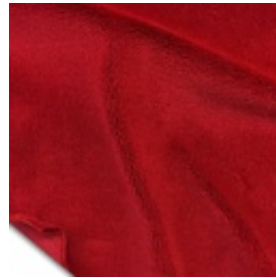
Copen Blue
#100043



Cobre
#100044



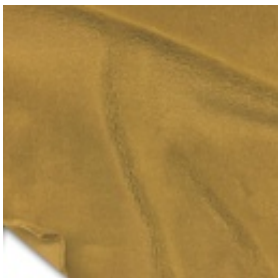
Cornflower
#100045



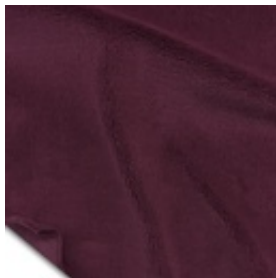
Crimson
#100046



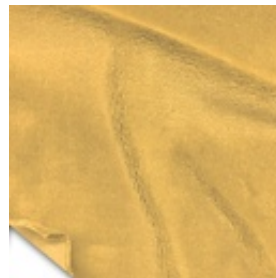
Delft Blue
#100047



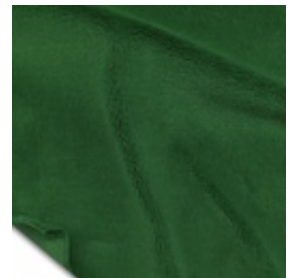
Doeskin
#100048



Berenjena
#100049



Oro
#100050



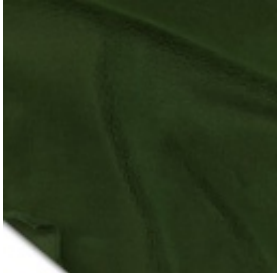
Verde
#100051

Store Hours: Monday – Friday from 8AM – 4:30PM PST



S&K Theatrical Draperies
7313 Varna Avenue
North Hollywood CA 91605
United States

True custom solutions since 1965



Hunter
#100052



Hyacinth
#100053



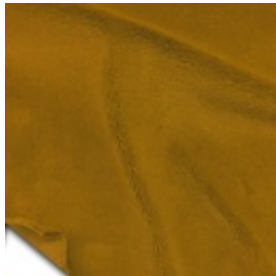
Azul Hielo
#100054



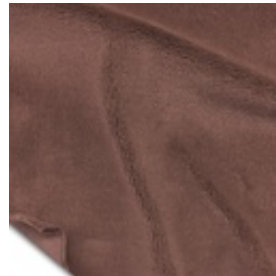
Azul Tinta
#100055



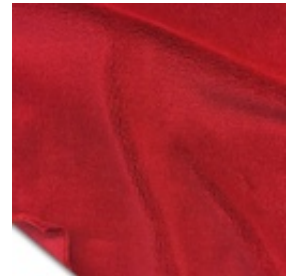
Old Jade
#100056



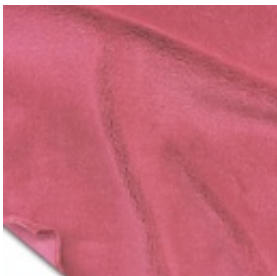
Maíz
#100057



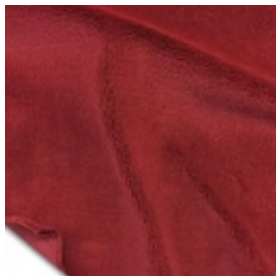
Moleskin
#100059



Persimmon
#100062



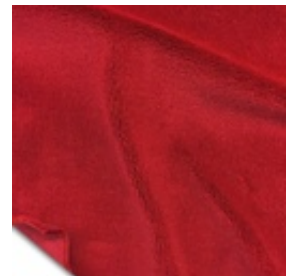
Rosado
#100064



Plum
#100065



Pussywillow
#100066



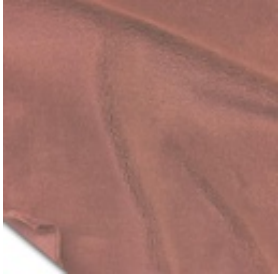
Rojo Real
#100067

Store Hours: Monday – Friday from 8AM – 4:30PM PST

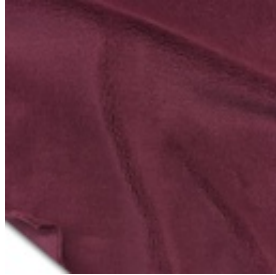


S&K Theatrical Draperies
7313 Varna Avenue
North Hollywood CA 91605
United States

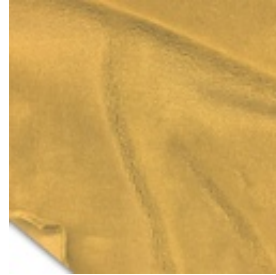
True custom solutions since 1965



Palo Rosa
#100068



Rubí
#100069



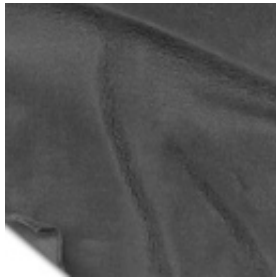
Trigo
#100070



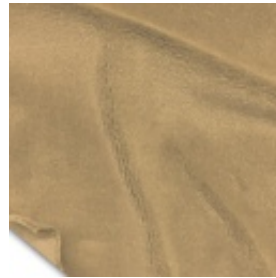
Negro
#100077



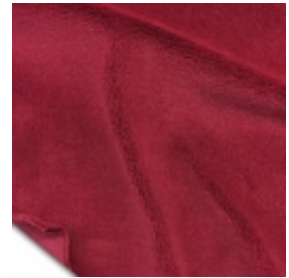
Navy
#100078



Estaño
#100079



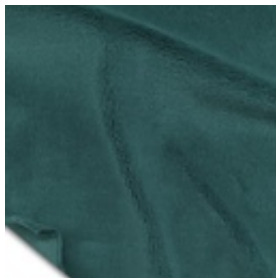
Moca
#100080



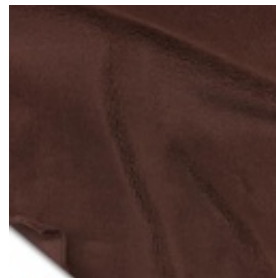
Rojo
#100081



Blanco
#100082



Peacock
#100160



Marrón
#100161

Store Hours: Monday – Friday from 8AM – 4:30PM PST