



FABRIC SPECIFICATION SHEET



54" Terciopelo Magic 32 oz. FR (Ladrillo Colonial)

#100042

Yardas por Rollo / Bulto: 50 yardas (+/-)

Ancho: 54" (4'6" - 137 cm)

Disponibilidad: Rollo completo o más

Peso por yarda lineal: 32oz (907g)

Composición: 100% algodón

Tipo de antifiama: FR - Ignífugo

Test antifiama: California Title 19

Terciopelo De Algodón Ultra-Pesado

El terciopelo 100% de algodón más pesado del mercado. Esta tela combina una pila extra larga con una textura lujosa que proporciona un aspecto mate rico, una opacidad total y una absorción de sonido superior. El terciopelo ignífugo Magic es una alternativa más gruesa y pesada que el terciopelo Memorable.

Disponible por yarda en color negro. Otros colores disponibles en incrementos de rollo completo.

NOTA: Sujeto a decoloración si se expone directamente a la luz solar.

Esta tela también está clasificada por sus propiedades acústicas:

Coefficiente de reducción de ruido NRC: 1.05 *

Absorción de sonido promedio SAA: 1.04 *

*Drapeado con pliegues al 100%, pelo hacia abajo.

El Velour Memorable cumple con los requisitos mínimos de resistencia a las llamas establecidos por estos ensayos:

- NFPA 701 – Small Scale
- NFPA 701 – Test Method#1

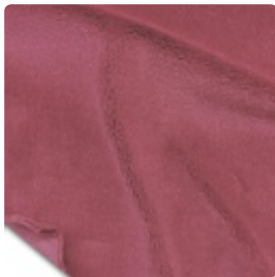


S&K Theatrical Draperies
7313 Varna Avenue
North Hollywood CA 91605
United States

True custom solutions since 1965

- California Title 19
- Canadian ULC S-109
- British Standard C-1410
- ASTM E-84

FABRIC COLOR TABLE



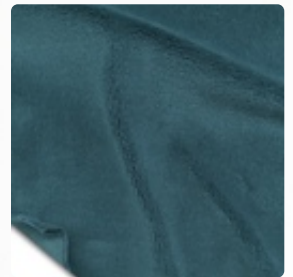
Rosa Americano
#100034



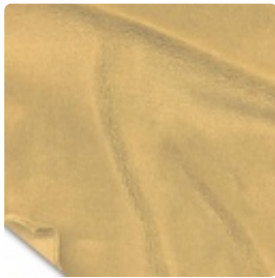
Aqua
#100035



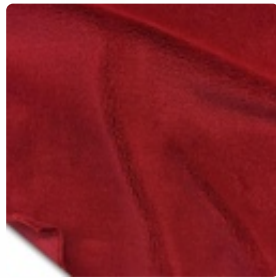
Brandy
#100037



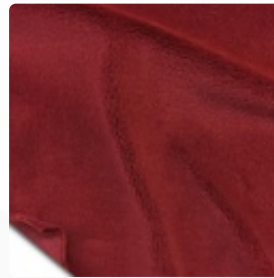
Azul Cadete
#100039



Gamuza
#100040



Cereza
#100041

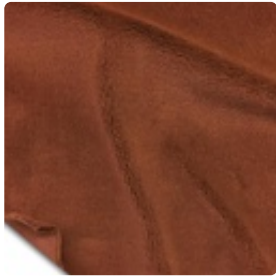


Ladrillo Colonial
#100042

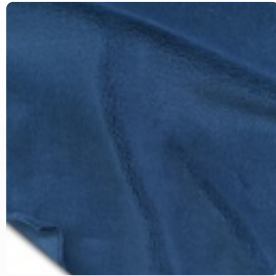


Copen Blue
#100043

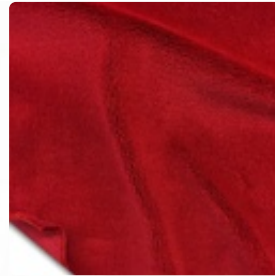
Office hours: Mon thru Friday from 8am to 4:30pm PST



Cobre
#100044



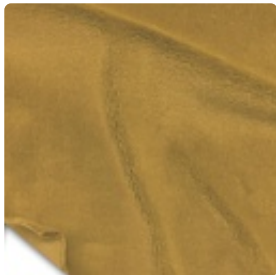
Cornflower
#100045



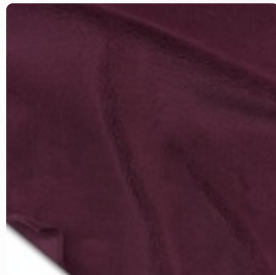
Crimson
#100046



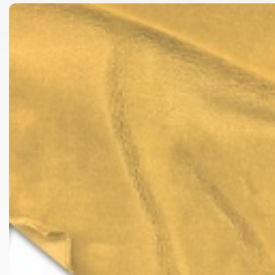
Delft Blue
#100047



Doeskin
#100048



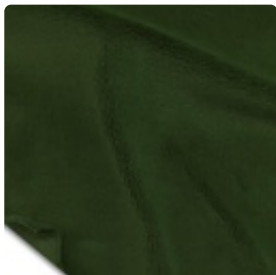
Berenjena
#100049



Oro
#100050



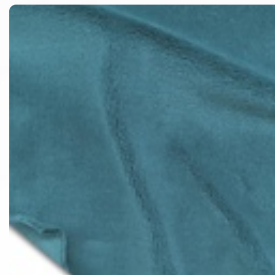
Verde
#100051



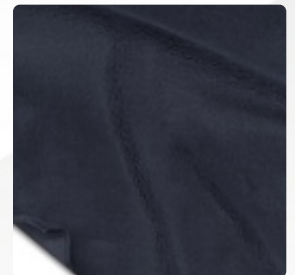
Hunter
#100052



Hyacinth
#100053



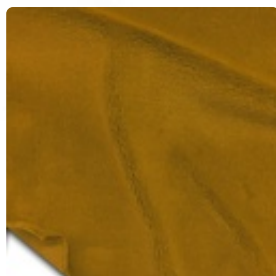
Azul Hielo
#100054



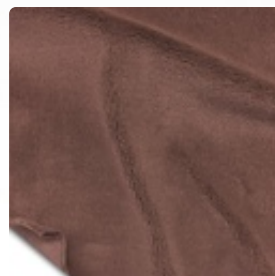
Azul Tinta
#100055



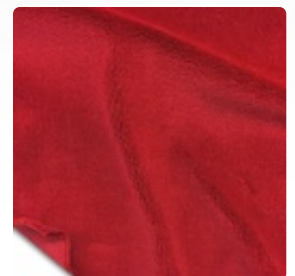
Old Jade
#100056



Maíz
#100057



Moleskin
#100059



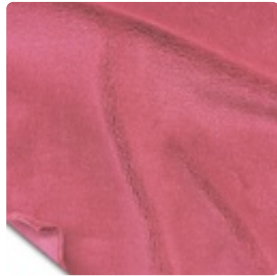
Persimmon
#100062

Office hours: Mon thru Friday from 8am to 4:30pm PST

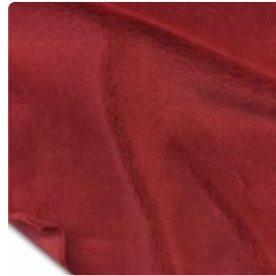


S&K Theatrical Draperies
7313 Varna Avenue
North Hollywood CA 91605
United States

True custom solutions since 1965



Rosado
#100064



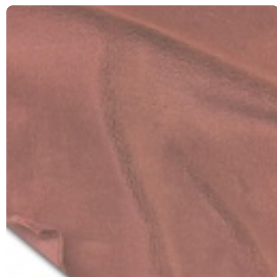
Plum
#100065



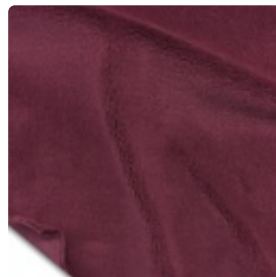
Pussywillow
#100066



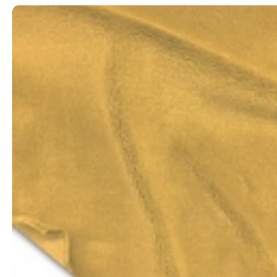
Rojo Real
#100067



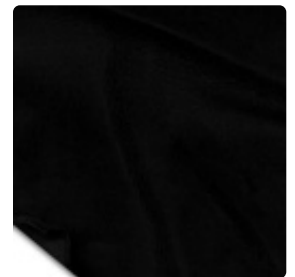
Palo Rosa
#100068



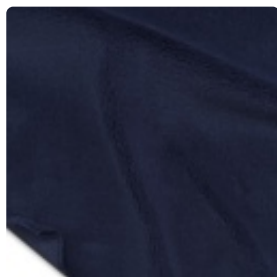
Rubí
#100069



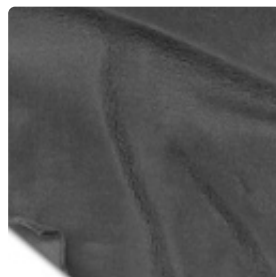
Trigo
#100070



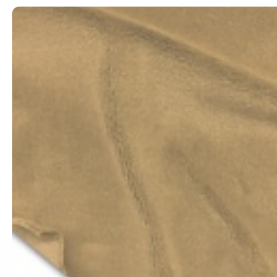
Negro
#100077



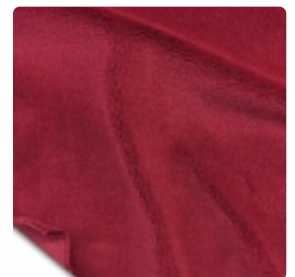
Navy
#100078



Estaño
#100079



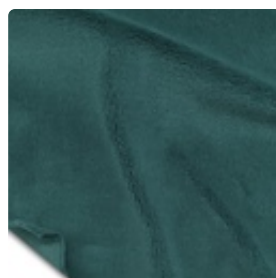
Moca
#100080



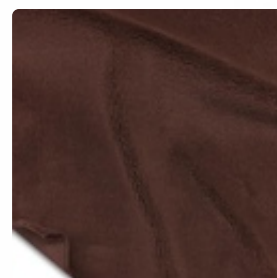
Rojo
#100081



Blanco
#100082



Peacock
#100160



Marrón
#100161

Office hours: Mon thru Friday from 8am to 4:30pm PST