



S&K Theatrical Draperies  
7313 Varna Avenue  
North Hollywood CA 91605  
United States

True custom solutions since 1965

## ESPECIFICACIONES DE LA TELA



### 54" Terciopelo Plateau 13 oz. IFR (Rosa Americano)

#100229

Yardas por Rollo / Bulto: 100 yardas (+/-)

Ancho: 54" (4'6" - 137 cm)

Disponibilidad: Por yarda o rollo completo (varía según el color)

Peso por yarda lineal: 13oz (369g)

Peso por yarda cuadrada: 9oz (255g)

Composición: 100% Trevira® poliéster

Tipo de antinflama: IFR - Ignífugo permanente

Test antinflama: State of California - F-59901 · California Title 19 · NFPA 260A/UFAC Class 1 · CAN/ULS-S109- 03 Canadian flame test for fabrics · NFPA 701 - Small Scale · NFPA 701 - Test Method#1 · British BS 5867: Part 2: 1980

## Terciopelo Lujoso Y Económico

El terciopelo sintético Plateau -conocido como Velour Plateau- es un material ignífugo permanente, tejido de fibras 100% de poliéster Trevira CS. Esta tela combina el aspecto y la consistencia de un terciopelo más pesado a una fracción del precio. También conocido como terciopelo Apollo o Velour Apollo, este material es resistente a las arrugas y al desgarro, cuenta con una pila densa felposa con una textura suave, es virtualmente opaco y se drapea fácilmente.

Esta tela también está clasificada por sus propiedades acústicas:

Coefficiente de reducción de ruido NRC: 0.95 \*

## COLORES DISPONIBLES

Store Hours: Monday - Friday from 8AM - 4:30PM PST



S&K Theatrical Draperies  
7313 Varna Avenue  
North Hollywood CA 91605  
United States

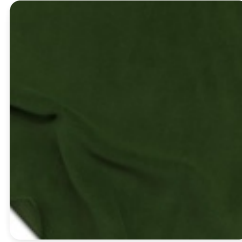
True custom solutions since 1965



Negro  
#100203



Old Jade  
#100204



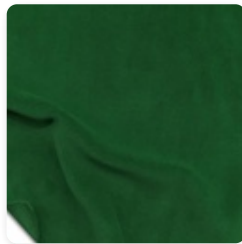
Hunter  
#100205



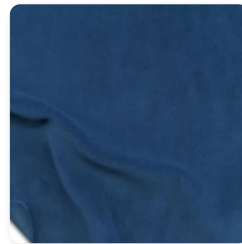
Azul Tinta  
#100206



Navy  
#100207



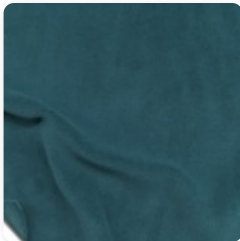
Verde  
#100208



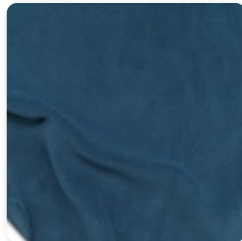
Cornflower  
#100209



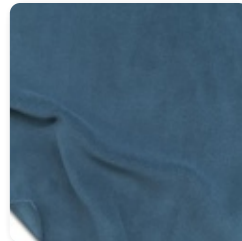
Hyacinth  
#100210



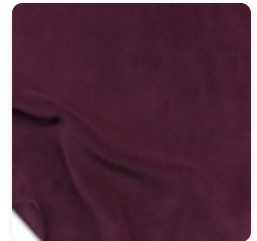
Azul Cadete  
#100211



Delft Blue  
#100212



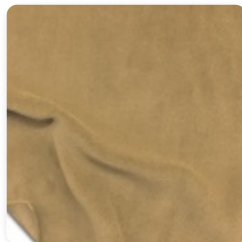
Copen Blue  
#100213



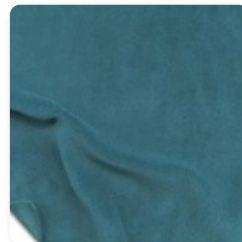
Berenjena  
#100214



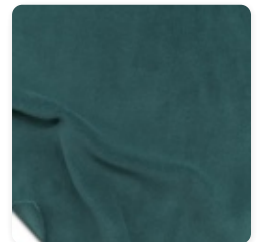
Estaño  
#100215



Moca  
#100216



Azul Hielo  
#100217



Peacock  
#100218

---

Store Hours: Monday – Friday from 8AM – 4:30PM PST



S&K Theatrical Draperies  
7313 Varna Avenue  
North Hollywood CA 91605  
United States

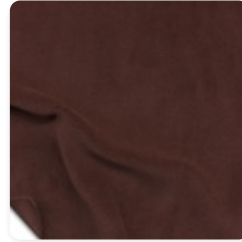
True custom solutions since 1965



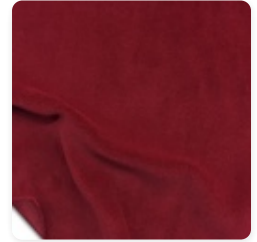
Aqua  
#100219



Rubí  
#100220



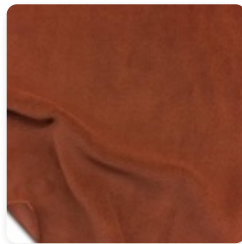
Marrón  
#100221



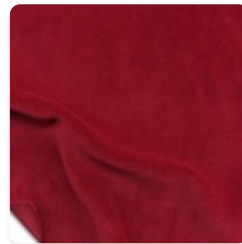
Ladrillo Colonial  
#100222



Moleskin  
#100223



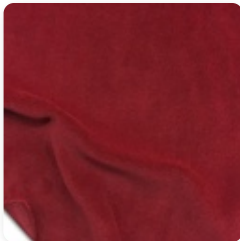
Cobre  
#100224



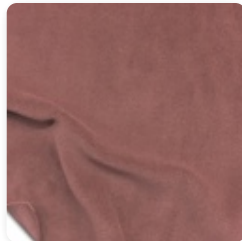
Cereza  
#100225



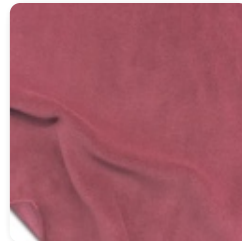
Maíz  
#100226



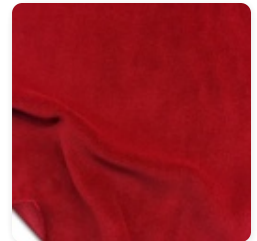
Plum  
#100227



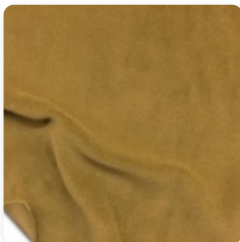
Palo Rosa  
#100228



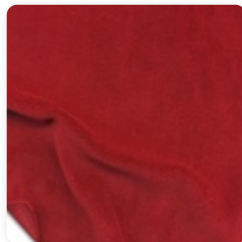
Rosa Americano  
#100229



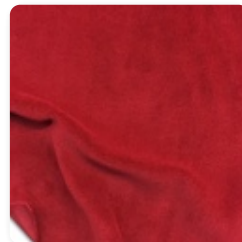
Crimson  
#100230



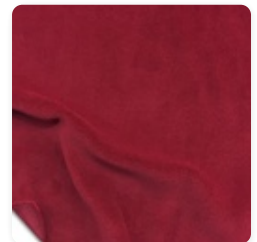
Doeskin  
#100231



Rojo Real  
#100232



Persimmon  
#100233



Rojo  
#100234

---

Store Hours: Monday – Friday from 8AM – 4:30PM PST

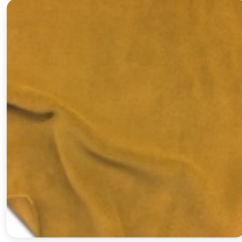


S&K Theatrical Draperies  
7313 Varna Avenue  
North Hollywood CA 91605  
United States

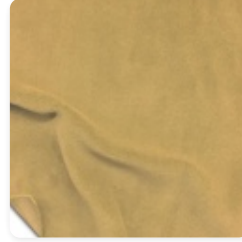
True custom solutions since 1965



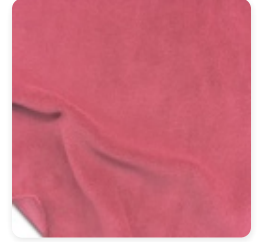
**Pussywillow**  
#100235



**Brandy**  
#100236



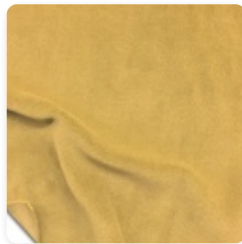
**Gamuza**  
#100237



**Rosado**  
#100238



**Trigo**  
#100239



**Oro**  
#100240



**Blanco**  
#100241



**Thunder**  
#105348



**Storm**  
#105349

---

Store Hours: Monday – Friday from 8AM – 4:30PM PST