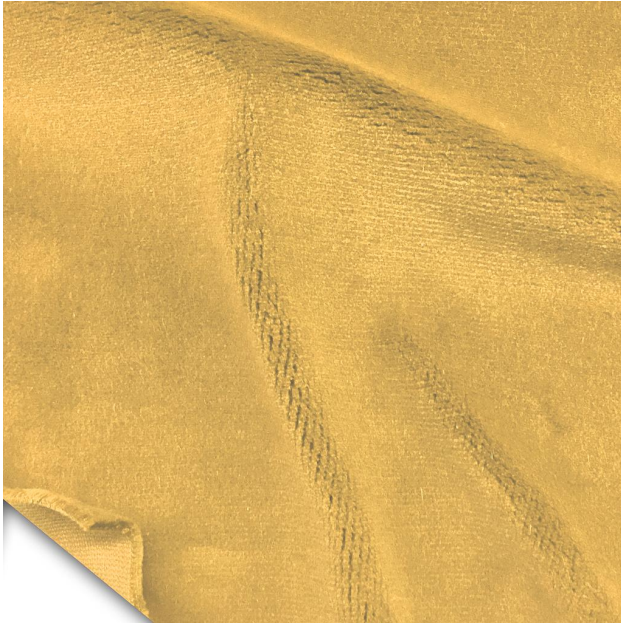




S&K Theatrical Draperies  
7313 Varna Avenue  
North Hollywood CA 91605  
United States

True custom solutions since 1965

## FABRIC SPECIFICATION SHEET



### 54" Magic Velour 32 oz. FR (Gold)

#100050

Fabric color: Crimson - Ink Blue - Red - Hyacinth - Cornflower - Plum - Old Jade - Persimmon - Aqua - Hunter - Peacock - Ice Blue - Pewter - Delft Blue - Wheat - Cadet Blue - Black - Gold - Copen Blue - Pussywillow - Chamois - Regal Red - Colonial Brick - Green - Navy - White - Eggplant - Mocha - Ruby - Brown - Moleskin - Copper - Cherry - Maize - Ash Rose - American Ash Rose - Doeskin - Brandy - Pink

Yards per Roll / Bale: 50 yards (+/-)

Fabric width: 54" (4'6" - 137 cm)

Availability: Full roll or more

Weight per linear yard: 32oz (907g)

Fiber content: 100% cotton

FR class: FR - Flame Retardant

FR test: California Title 19 - Canadian ULC S-109 - NFPA 701 - Small Scale - NFPA 701 - Test Method#1 - British Standard C-14101 - ASTM E-84

### Our Heaviest Weight Cotton Velour

The heaviest weight 100% cotton Velour in the market. This fabric combines an extra long nap with a plushy texture that provides a rich matte look, total opacity and superior sound dampening. Magic Velour is a heavier and thicker fabric alternative to Memorable Velour.

Stocked in black. Colors sold in full roll increments.

#### IMPORTANT NOTES:

Color on cotton velour will fade over time if exposed to direct sunlight.

---

Store Hours: Monday - Friday from 8AM - 4:30PM PST



S&K Theatrical Draperies  
7313 Varna Avenue  
North Hollywood CA 91605  
United States

True custom solutions since 1965

Stocked in black only. Colors are special order and sold in full roll increments, with a 4-5 week lead time.

This fabric is also lab tested and rated for its acoustical properties:

Noise Reduction Coefficient NRC: 1.05 \*

Sound Absorption Average SAA: 1.04 \*

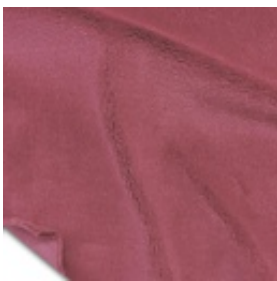
\*Pleated with 100% fullness, nap down.

Magic Velour meets the minimum requirements of flame resistance established by these tests:

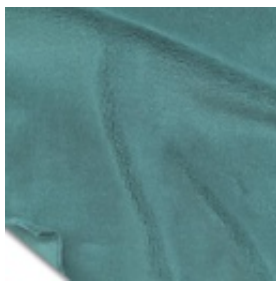
- NFPA 701 - Small Scale
- NFPA 701 - Test Method#1
- California Title 19
- Canadian ULC S-109
- British Standard C-1410
- ASTM E-84

---

## FABRIC COLOR TABLE



American Ash Rose  
#100034



Aqua  
#100035



Brandy  
#100037



Cadet Blue  
#100039

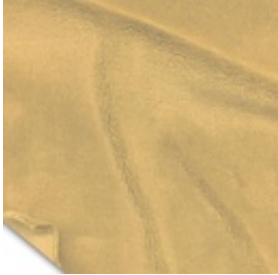
---

Store Hours: Monday - Friday from 8AM - 4:30PM PST

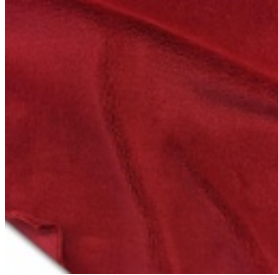


S&K Theatrical Draperies  
7313 Varna Avenue  
North Hollywood CA 91605  
United States

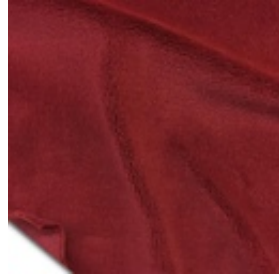
True custom solutions since 1965



Chamois  
#100040



Cherry  
#100041



Colonial Brick  
#100042



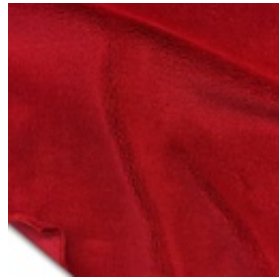
Copen Blue  
#100043



Copper  
#100044



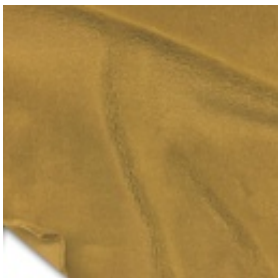
Cornflower  
#100045



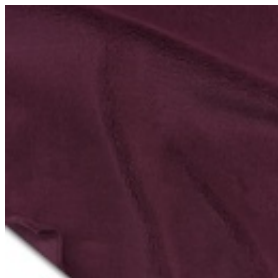
Crimson  
#100046



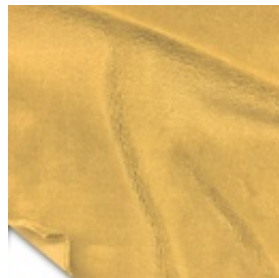
Delft Blue  
#100047



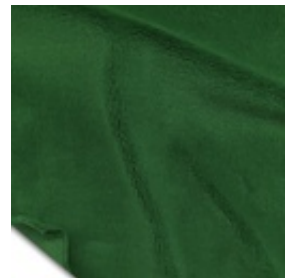
Doeskin  
#100048



Eggplant  
#100049



Gold  
#100050



Green  
#100051

---

Store Hours: Monday – Friday from 8AM – 4:30PM PST



S&K Theatrical Draperies  
7313 Varna Avenue  
North Hollywood CA 91605  
United States

True custom solutions since 1965



Hunter  
#100052



Hyacinth  
#100053



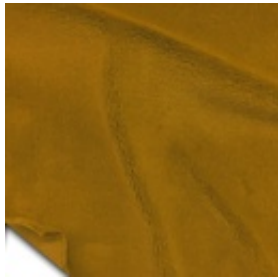
Ice Blue  
#100054



Ink Blue  
#100055



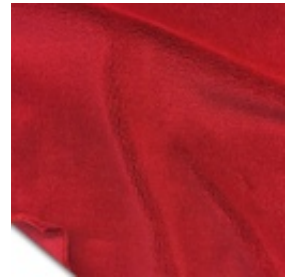
Old Jade  
#100056



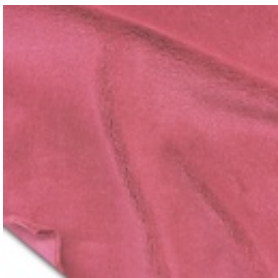
Maize  
#100057



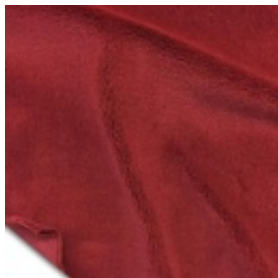
Moleskin  
#100059



Persimmon  
#100062



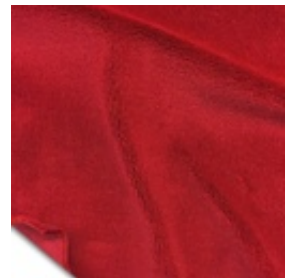
Pink  
#100064



Plum  
#100065



Pussywillow  
#100066



Regal Red  
#100067

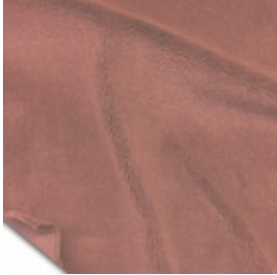
---

Store Hours: Monday – Friday from 8AM – 4:30PM PST

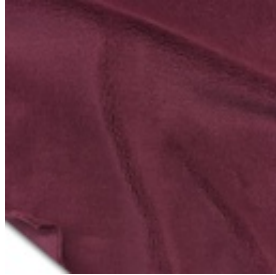


S&K Theatrical Draperies  
7313 Varna Avenue  
North Hollywood CA 91605  
United States

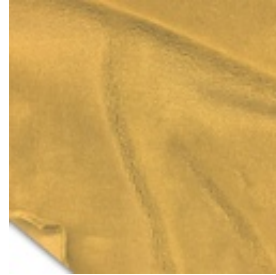
True custom solutions since 1965



Ash Rose  
#100068



Ruby  
#100069



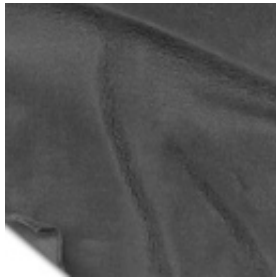
Wheat  
#100070



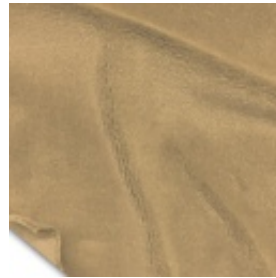
Black  
#100077



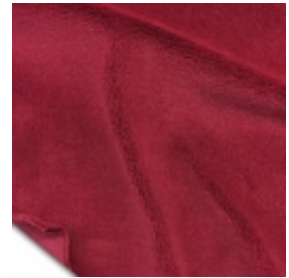
Navy  
#100078



Pewter  
#100079



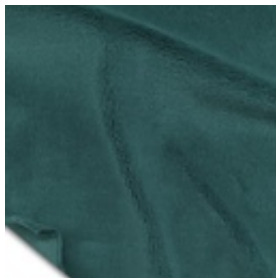
Mocha  
#100080



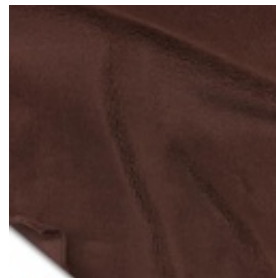
Red  
#100081



White  
#100082



Peacock  
#100160



Brown  
#100161

---

Store Hours: Monday – Friday from 8AM – 4:30PM PST