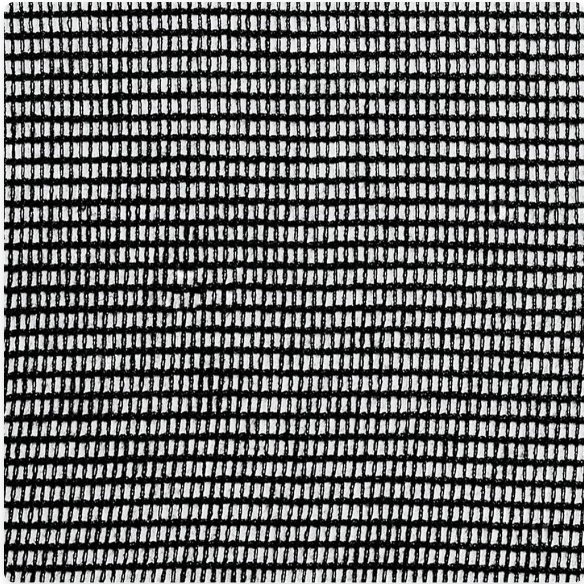




S&K Theatrical Draperies
7313 Varna Avenue
North Hollywood CA 91605
United States

True custom solutions since 1965

FABRIC SPECIFICATION SHEET



Black Sharkstooth Scrim Cotton - FR (372" (31 ft - 945 cm))

#104553

Yards per Roll / Bale 60 yards (+/-)

Fabric width: 372" (31 ft - 945 cm) · 216" (18 ft - 548 cm) · 252" (21 ft - 640 cm) · 432" (36 ft - 1097 cm)

Availability: Full roll & cut yardage

Weight per linear yard See weight chart

Weight per square yard See weight chart

Fiber content: 100% cotton

FR class: FR - Flame Retardant

FR test: NFPA 701 · CAFM Reg # F-545.07

Used For The “Bleed-Through” Effect

Flame retardant classic theater Black Sharkstooth Scrim, 8 point, 2 thread open-weave. The chosen material for backdrops used for disappearing/reappearing acts on stage by manipulating stage lighting, also known as the “bleed-through” effect.

This netting can both reflect and transmit light and can be used to project abstract images. The scrim rectangular weave is dense enough to be dye-painted without altering the scrim unique capabilities, making it a very versatile piece of stage scenery.

THE RIGHT LIGHTING CREATES THE MAGIC

When the right lighting effects are projected into this fabric scenes and performers appear and disappear like magic. If a scrim is lit from the front at a highly oblique angle, and the portion of the stage behind it is kept dark, the scrim will appear opaque rendering the scene behind invisible. However, when the scene behind the scrim is illuminated and the lighting in front of the scrim is dimmed, the scrim becomes invisible, revealing the upstage scene. Using double layers of scrims creates a “moiré” effect.

Store Hours: Monday – Friday from 8AM – 4:30PM PST



S&K Theatrical Draperies
7313 Varna Avenue
North Hollywood CA 91605
United States

True custom solutions since 1965

Cut yardage fabric may be folded to ship via UPS. Full bales ship via LTL freight.

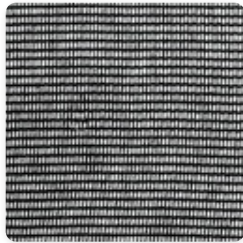
FR Sharkstooth Scrim meets the minimum requirements of flame resistance established by the California State Fire Marshall for products identified in Section 13115, California Health and Safety Code.

- NFPA 701
- CAFM Reg # F-545.07

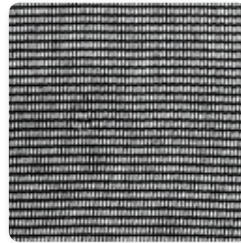
FABRIC COLOR TABLE



372" (31 ft - 945 cm)
#104553



216" (18 ft - 548 cm)
#104554



252" (21 ft - 640 cm)
#104555



432" (36 ft - 1097 cm)
#104556

Store Hours: Monday – Friday from 8AM – 4:30PM PST