



S&K Theatrical Draperies
7313 Varna Avenue
North Hollywood CA 91605
United States

True custom solutions since 1965

FABRIC SPECIFICATION SHEET



58" Eclipse Blackout 12 oz. IFR (Iguana)

#100454

Yards per Roll / Bale: 50 yards (+/-)

Fabric width: 58" (4'10" - 147 cm)

Availability: Full roll & cut yardage

Weight per linear yard: 12oz (340g)

Weight per square yard: 7.45oz (211g)

Fiber content: 100% polyester

FR class: IFR - Inherently Flame Retardant

FR test: CAFM Reg # F-67801 - NFPA 701

Lustrous Medium-Weight IFR Fabric

Eclipse Blackout is a lustrous and elegant fabric with a dense woven construction that offers total opacity and feels soft to the touch. Medium in weight and ideal for curtains that require total light blockage without the added cost of a liner. Great for decorative Austrian curtains and Swags, as well as room dividing drapes and event decoration. Since the front and back face of the fabric look identical, it is considered a "reversible" fabric. Can be used as drapery lining.

Eclipse Blackout meets the minimum requirements of flame resistance established by the California State Fire Marshall for products identified in Section 13115, California Health and Safety Code.

- NFPA 701
- CAFM Reg # F-67801

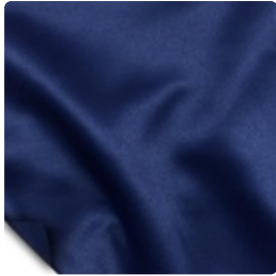
Store Hours: Monday – Friday from 8AM – 4:30PM PST



S&K Theatrical Draperies
7313 Varna Avenue
North Hollywood CA 91605
United States

True custom solutions since 1965

FABRIC COLOR TABLE



Bermuda
#100453



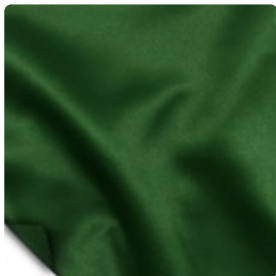
Iguana
#100454



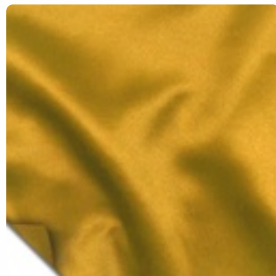
Silver
#100455



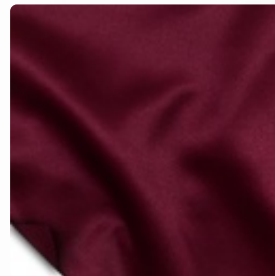
Black
#100456



Hunter
#100457



Gold
#100458



Wine
#100461

Store Hours: Monday – Friday from 8AM – 4:30PM PST