



S&K Theatrical Draperies  
7313 Varna Avenue  
North Hollywood CA 91605  
United States

True custom solutions since 1965

## FABRIC SPECIFICATION SHEET



### 54" Magic Velour 32 oz. FR (Aqua)

#100035

Yards per Roll / Bale 50 yards (+/-)

Fabric width: 54" (4'6" - 137 cm)

Availability: Full roll or more

Weight per linear yard 32oz (907g)

Fiber content: 100% cotton

FR class: FR - Flame Retardant

FR test: California Title 19 · Canadian ULC S-109 · NFPA 701 – Small Scale ·  
NFPA 701 – Test Method#1 · British Standard C-14101 · ASTM E-84

## Our Heaviest Weight Cotton Velour

The heaviest weight 100% cotton Velour in the market. This fabric combines an extra long nap with a plushy texture that provides a rich matte look, total opacity and superior sound dampening. Magic Velour is a heavier and thicker fabric alternative to Memorable Velour.

Stocked in black. Colors sold in full roll increments.

### IMPORTANT NOTES:

Color on cotton velour will fade over time if exposed to direct sunlight.

Stocked in black only. Colors are special order and sold in full roll increments, with a 4-5 week lead time.

This fabric is also lab tested and rated for its acoustical properties:

Noise Reduction Coefficient NRC: 1.05 \*

Sound Absorption Average SAA: 1.04 \*

\*Pleated with 100% fullness, nap down.

Store Hours: Monday – Friday from 8AM – 4:30PM PST



S&K Theatrical Draperies  
7313 Varna Avenue  
North Hollywood CA 91605  
United States

True custom solutions since 1965

Magic Velour meets the minimum requirements of flame resistance established by these tests:

- NFPA 701 - Small Scale
- NFPA 701 - Test Method#1
- California Title 19
- Canadian ULC S-109
- British Standard C-1410
- ASTM E-84

---

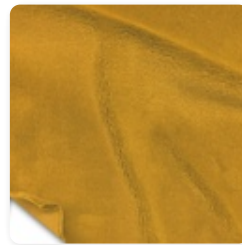
### FABRIC COLOR TABLE



American Ash Rose  
#100034



Aqua  
#100035



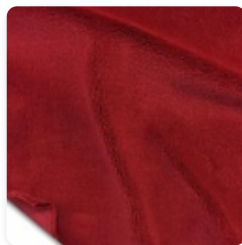
Brandy  
#100037



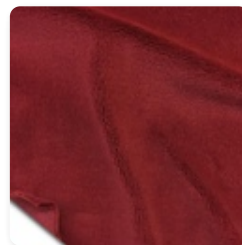
Cadet Blue  
#100039



Chamois  
#100040



Cherry  
#100041



Colonial Brick  
#100042



Copen Blue  
#100043

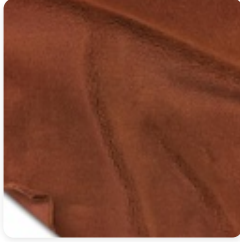
---

Store Hours: Monday - Friday from 8AM - 4:30PM PST

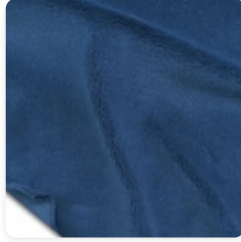


S&K Theatrical Draperies  
7313 Varna Avenue  
North Hollywood CA 91605  
United States

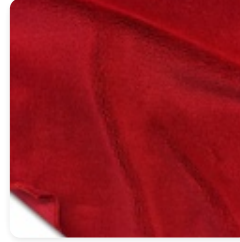
True custom solutions since 1965



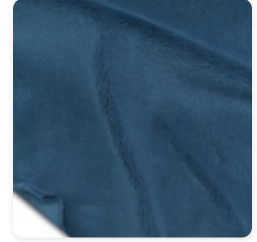
Copper  
#100044



Cornflower  
#100045



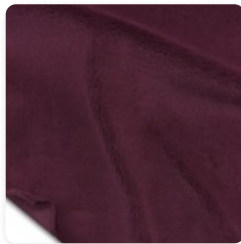
Crimson  
#100046



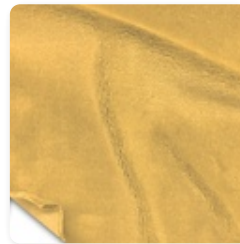
Delft Blue  
#100047



Doeskin  
#100048



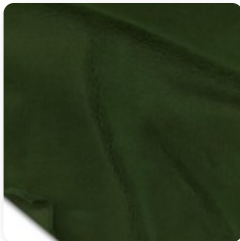
Eggplant  
#100049



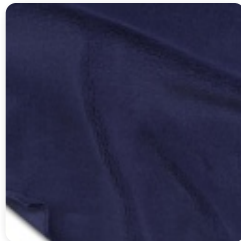
Gold  
#100050



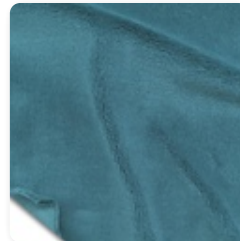
Green  
#100051



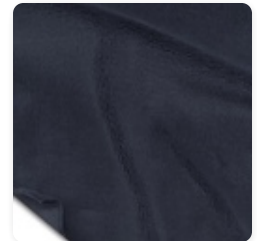
Hunter  
#100052



Hyacinth  
#100053



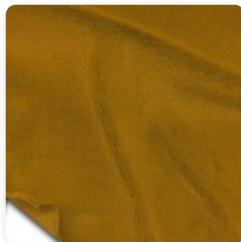
Ice Blue  
#100054



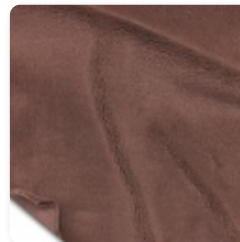
Ink Blue  
#100055



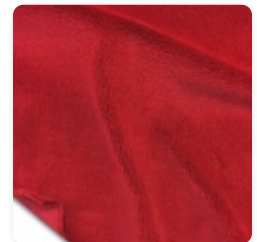
Old Jade  
#100056



Maize  
#100057



Moleskin  
#100059



Persimmon  
#100062

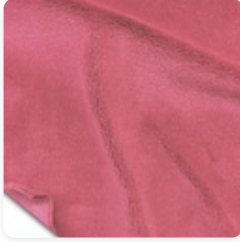
---

Store Hours: Monday – Friday from 8AM – 4:30PM PST

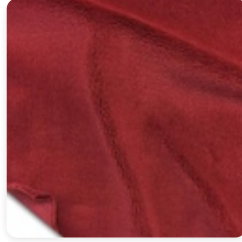


S&K Theatrical Draperies  
7313 Varna Avenue  
North Hollywood CA 91605  
United States

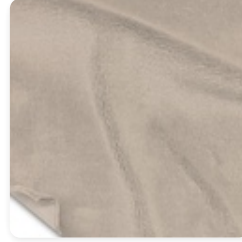
True custom solutions since 1965



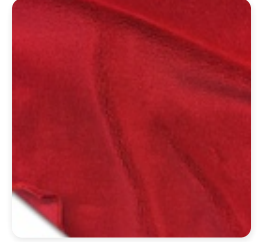
**Pink**  
#100064



**Plum**  
#100065



**Pussywillow**  
#100066



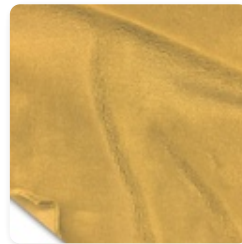
**Regal Red**  
#100067



**Ash Rose**  
#100068



**Ruby**  
#100069



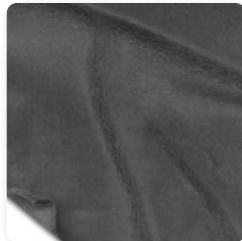
**Wheat**  
#100070



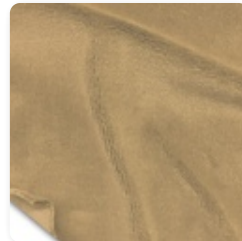
**Black**  
#100077



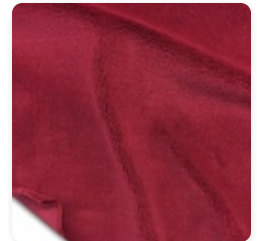
**Navy**  
#100078



**Pewter**  
#100079



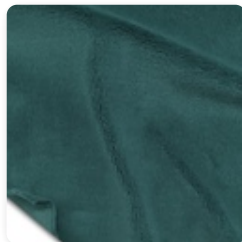
**Mocha**  
#100080



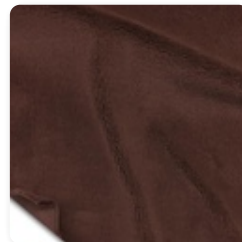
**Red**  
#100081



**White**  
#100082



**Peacock**  
#100160



**Brown**  
#100161

---

Store Hours: Monday – Friday from 8AM – 4:30PM PST