



S&K Theatrical Draperies
7313 Varna Avenue
North Hollywood CA 91605
United States

True custom solutions since 1965

ESPECIFICACIONES DE LA TELA



54" Terciopelo Plateau 13 oz. IFR (Rosa Americano)

#100229

Color: Crimson - Azul Tinta - Rojo - Hyacinth - Cornflower - Plum - Old Jade - Persimmon - Aqua - Hunter - Peacock - Azul Hielo - Estaño - Delft Blue - Trigo - Azul Cadete - Negro - Oro - Copen Blue - Pussywillow - Gamuza - Rojo Real - Ladrillo Colonial - Verde - Navy - Blanco - Berenjena - Moca - Rubí - Marrón - Moleskin - Cobre - Cereza - Maíz - Palo Rosa - Rosa Americano - Doeskin - Brandy - Rosado - Thunder - Storm

Yardas por Rollo / Bulto: 100 yardas (+/-)

Ancho: 54" (4'6" - 137 cm)

Disponibilidad: Por yarda o rollo completo (varía según el color)

Peso por yarda lineal: 13oz (369g)

Peso por yarda cuadrada: 9oz (255g)

Composición: 100% Trevira® poliéster

Tipo de antífama: IFR - Ignífugo permanente

Test antífama: State of California - F-59901 - California Title 19 - NFPA 260A/UFAC Class 1 - CAN/ULS-S109- 03 Canadian flame test for fabrics - NFPA 701 - Small Scale - NFPA 701 - Test Method#1 - British BS 5867: Part 2: 1980

Terciopelo Lujoso Y Económico

El terciopelo sintético Plateau -conocido como Velour Plateau- es un material ignífugo permanente, tejido de fibras 100% de poliéster Trevira CS. Esta tela combina el aspecto y la consistencia de un terciopelo más pesado a una fracción del precio. También conocido como terciopelo Apollo o Velour Apollo, este material es resistente a las arrugas y al desgarramiento, cuenta con

Store Hours: Monday - Friday from 8AM - 4:30PM PST



S&K Theatrical Draperies
7313 Varna Avenue
North Hollywood CA 91605
United States

True custom solutions since 1965

una pila densa felposa con una textura suave, es virtualmente opaco y se drapea fácilmente.

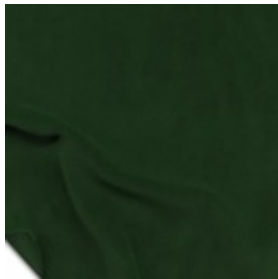
Esta tela también está clasificada por sus propiedades acústicas:

Coefficiente de reducción de ruido NRC: 0.95 *

COLORES DISPONIBLES



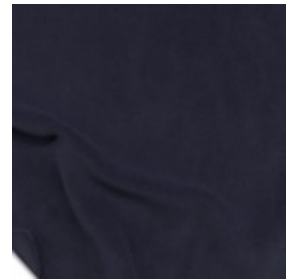
Negro
#100203



Old Jade
#100204



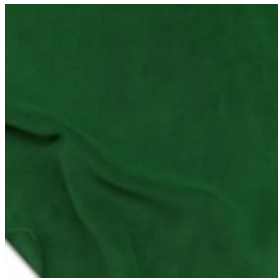
Hunter
#100205



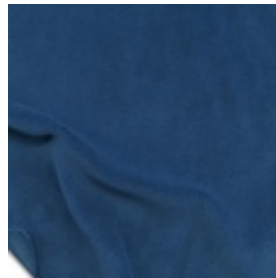
Azul Tinta
#100206



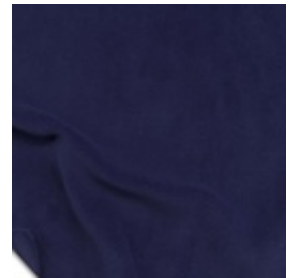
Navy
#100207



Verde
#100208



Cornflower
#100209



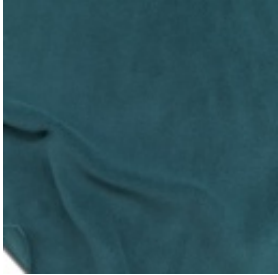
Hyacinth
#100210

Store Hours: Monday – Friday from 8AM – 4:30PM PST

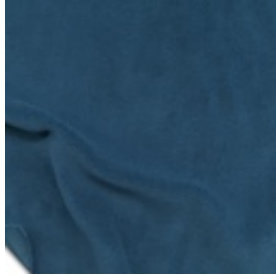


S&K Theatrical Draperies
7313 Varna Avenue
North Hollywood CA 91605
United States

True custom solutions since 1965



Azul Cadete
#100211



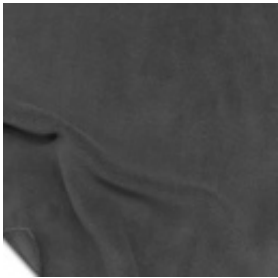
Delft Blue
#100212



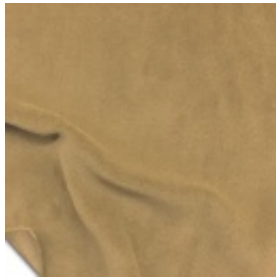
Copen Blue
#100213



Berenjena
#100214



Estaño
#100215



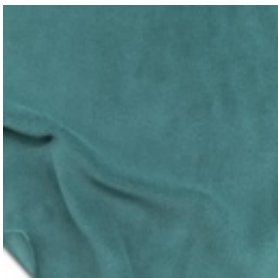
Moca
#100216



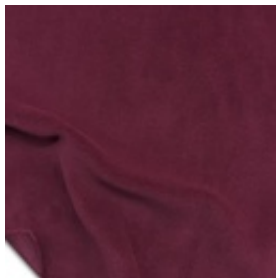
Azul Hielo
#100217



Peacock
#100218



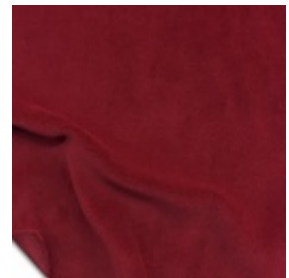
Aqua
#100219



Rubí
#100220



Marrón
#100221



Ladrillo Colonial
#100222

Store Hours: Monday – Friday from 8AM – 4:30PM PST

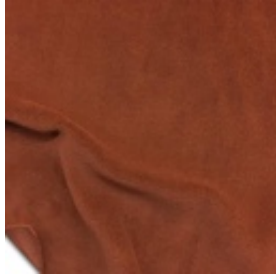


S&K Theatrical Draperies
7313 Varna Avenue
North Hollywood CA 91605
United States

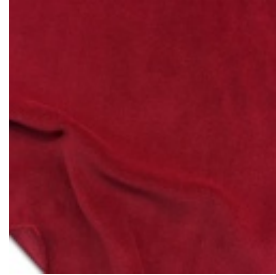
True custom solutions since 1965



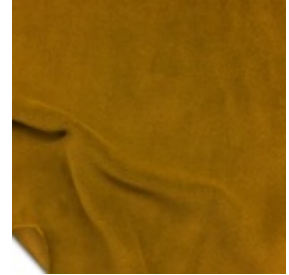
Moleskin
#100223



Cobre
#100224



Cereza
#100225



Maíz
#100226



Plum
#100227



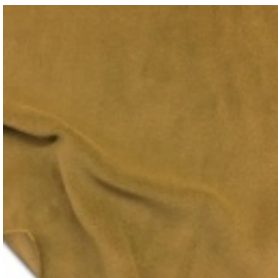
Palo Rosa
#100228



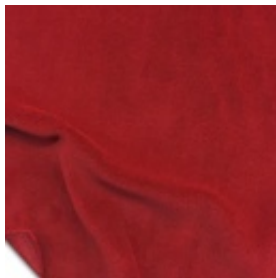
Rosa Americano
#100229



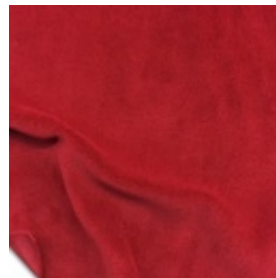
Crimson
#100230



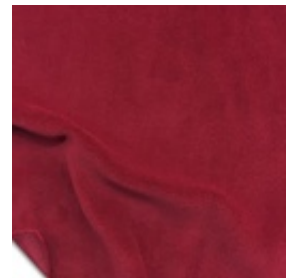
Doeskin
#100231



Rojo Real
#100232



Persimmon
#100233



Rojo
#100234

Store Hours: Monday – Friday from 8AM – 4:30PM PST



S&K Theatrical Draperies
7313 Varna Avenue
North Hollywood CA 91605
United States

True custom solutions since 1965



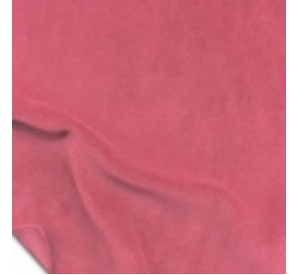
Pussywillow
#100235



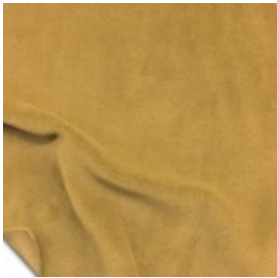
Brandy
#100236



Gamuza
#100237



Rosado
#100238



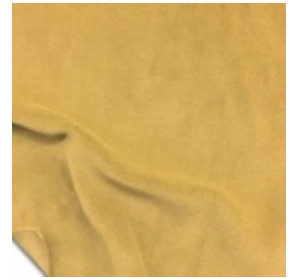
Trigo
#100239



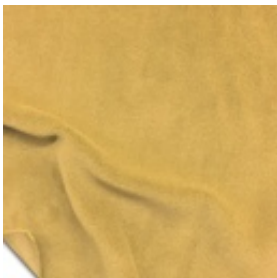
Oro
#100240



Blanco
#100241



Thunder
#105348



Storm
#105349

Store Hours: Monday – Friday from 8AM – 4:30PM PST