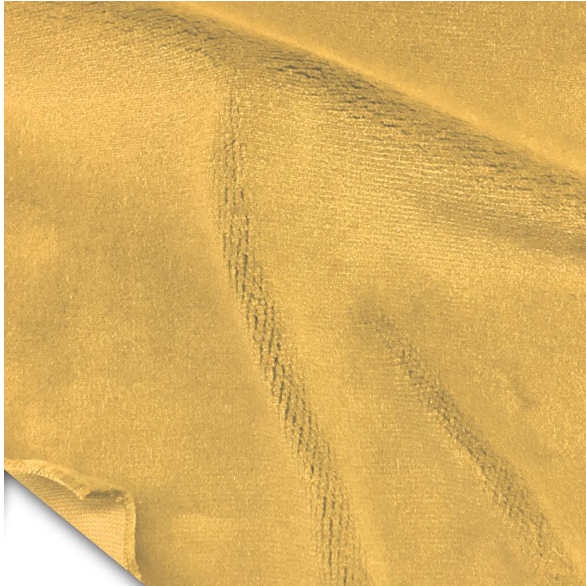




S&K Theatrical Draperies
7313 Varna Avenue
North Hollywood CA 91605
United States

True custom solutions since 1965

FABRIC SPECIFICATION SHEET



54" Magic Velour 32 oz. FR (Gold)

#0027-000050

Yards per Roll / Bale: 50 yards (+/-)

Fabric width: 54" (4'6" - 137 cm)

Availability: Full roll or more

Weight per linear yard: 32oz (907g)

Fiber content: 100% cotton

FR class: FR - Flame Retardant

FR test: California Title 19

Our Heaviest Weight Cotton Velour

The heaviest weight 100% cotton Velour in the market. This fabric combines an extra long nap with a plushy texture that provides a rich matte look, total opacity and superior sound dampening. Magic Velour is a heavier and thicker fabric alternative to Memorable Velour.

Stocked in black. Colors sold in full roll increments.

NOTE: Color on cotton velour will fade overtime if exposed to direct sunlight.

This fabric is also lab tested and rated for its acoustical properties:

Noise Reduction Coefficient NRC: 1.05 *

Sound Absorption Average SAA: 1.04 *

*Pleated with 100% fullness, nap down.

Magic Velour meets the minimum requirements of flame resistance established by these tests:

- NFPA 701 – Small Scale
- NFPA 701 – Test Method#1

Store Hours: Monday – Friday from 8AM – 4:30PM PST

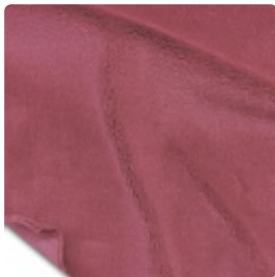


S&K Theatrical Draperies
7313 Varna Avenue
North Hollywood CA 91605
United States

True custom solutions since 1965

- California Title 19
- Canadian ULC S-109
- British Standard C-1410
- ASTM E-84

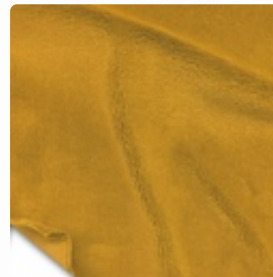
FABRIC COLOR TABLE



American Ash Rose
#0027-000034



Aqua
#0027-000035



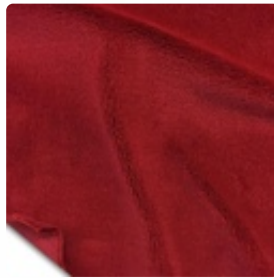
Brandy
#0027-000037



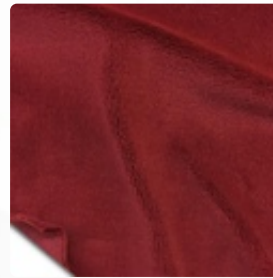
Cadet Blue
#0027-000039



Chamois
#0027-000040



Cherry
#0027-000041



Colonial Brick
#0027-000042



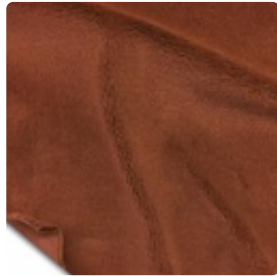
Copen Blue
#0027-000043

Store Hours: Monday – Friday from 8AM – 4:30PM PST

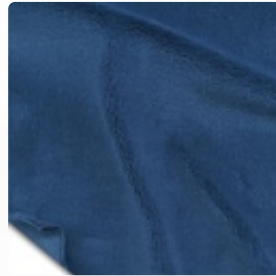


S&K Theatrical Draperies
7313 Varna Avenue
North Hollywood CA 91605
United States

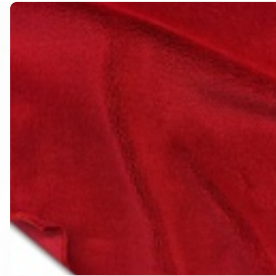
True custom solutions since 1965



Copper
#0027-000044



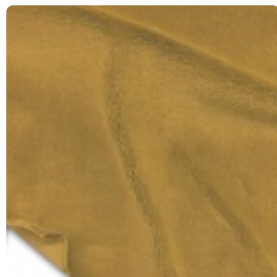
Cornflower
#0027-000045



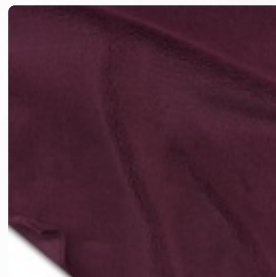
Crimson
#0027-000046



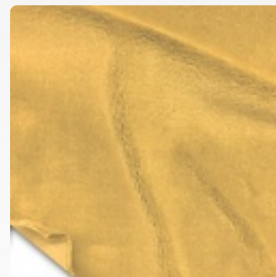
Delft Blue
#0027-000047



Doeskin
#0027-000048



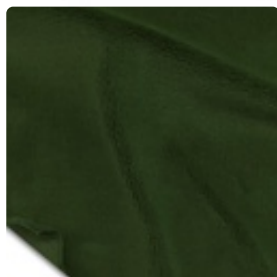
Eggplant
#0027-000049



Gold
#0027-000050



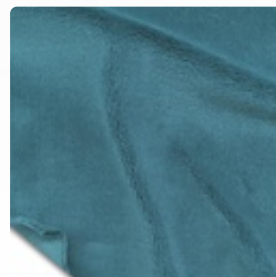
Green
#0027-000051



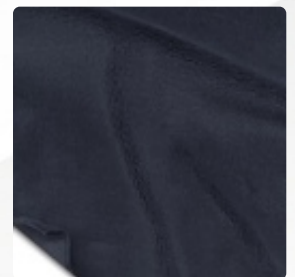
Hunter
#0027-000052



Hyacinth
#0027-000053



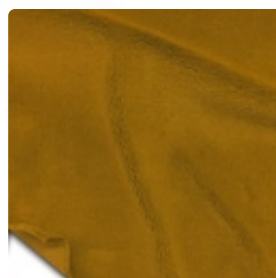
Ice Blue
#0027-000054



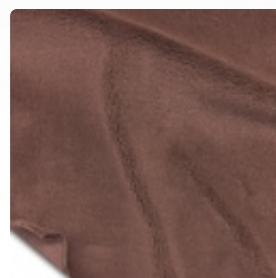
Ink Blue
#0027-000055



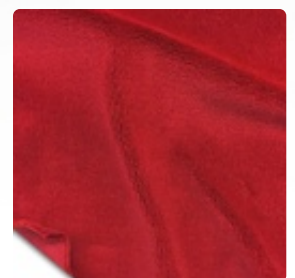
Old Jade
#0027-000056



Maize
#0027-000057



Moleskin
#0027-000059



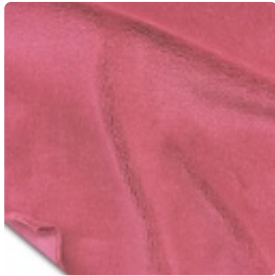
Persimmon
#0027-000062

Store Hours: Monday - Friday from 8AM - 4:30PM PST

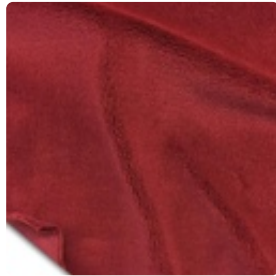


S&K Theatrical Draperies
7313 Varna Avenue
North Hollywood CA 91605
United States

True custom solutions since 1965



Pink
#0027-000064



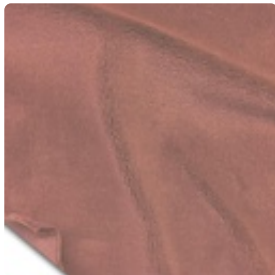
Plum
#0027-000065



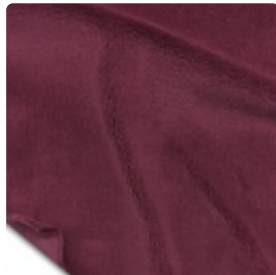
Pussywillow
#0027-000066



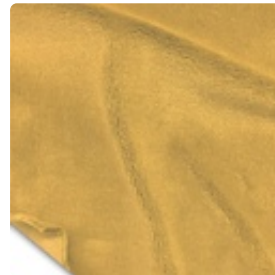
Regal Red
#0027-000067



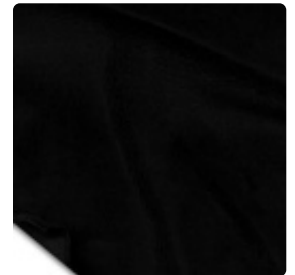
Ash Rose
#0027-000068



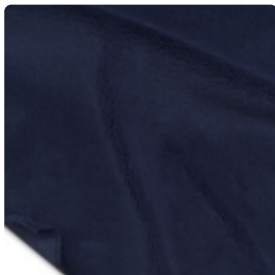
Ruby
#0027-000069



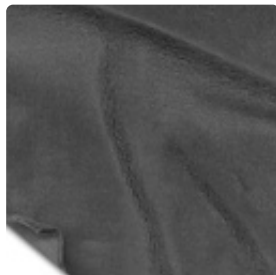
Wheat
#0027-000070



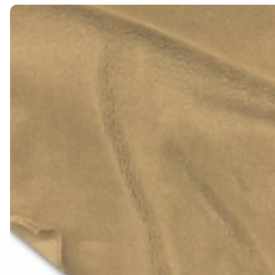
Black
#0027-000077



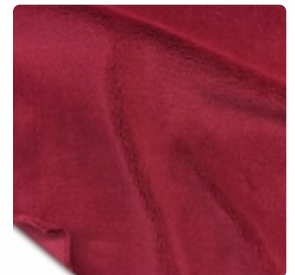
Navy
#0027-000078



Pewter
#0027-000079



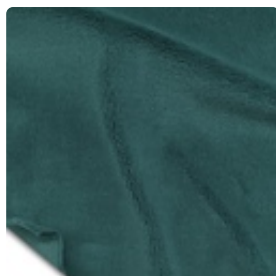
Mocha
#0027-000080



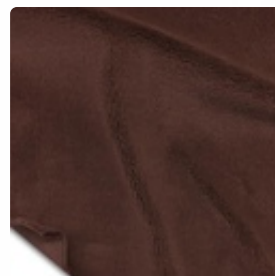
Red
#0027-000081



White
#0027-000082



Peacock
#0027-000160



Brown
#0027-000161

Store Hours: Monday - Friday from 8AM - 4:30PM PST