



## FABRIC SPECIFICATION SHEET



### 54" Chelsea Velour 13 oz. IFR (American Ash Rose)

#100229

Yards per Roll / Bale: 100 yards (+/-)

Fabric width: 54" (4'6" - 137 cm)

Availability: Full roll & cut yardage (varies by color)

Weight per linear yard: 13oz (369g)

Weight per square yard: 9oz (255g)

Fiber content: 100% Trevira® polyester

FR class: IFR - Inherently Flame Retardant

FR test: State of California - F-59901

### Luxurious And Affordable Velour

Synthetic Velour Chelsea is a light weight inherently flame retardant material woven from 100% Trevira CS polyester yarns and combines the rich look and feel of heavier weight velvet at a fraction of the price. This fabric features a plush dense pile with a soft hand, it drapes beautifully and is virtually opaque. Also known as Apollo Velour, this material is wrinkle resistant and tear resistant.

This fabric is also lab tested and rated for its acoustical properties:

Noise Reduction Coefficient NRC: 0.95 \*

## FABRIC COLOR TABLE



S&K Theatrical Draperies  
7313 Varna Avenue  
North Hollywood CA 91605  
United States

True custom solutions since 1965



Black  
#100203



Old Jade  
#100204



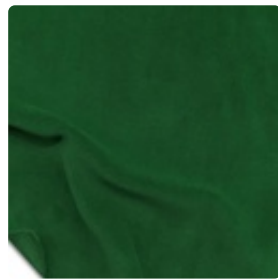
Hunter  
#100205



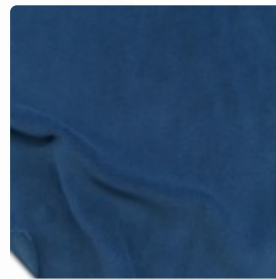
Ink Blue  
#100206



Navy  
#100207



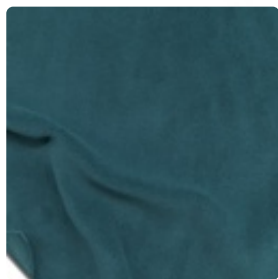
Green  
#100208



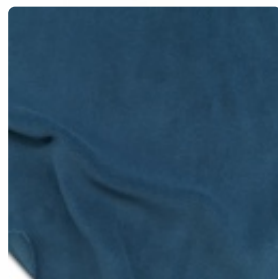
Cornflower  
#100209



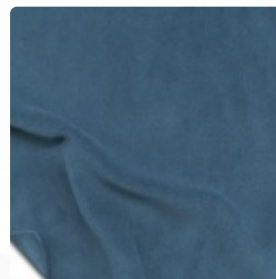
Hyacinth  
#100210



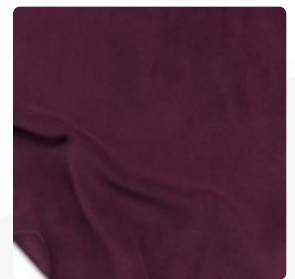
Cadet Blue  
#100211



Delft Blue  
#100212



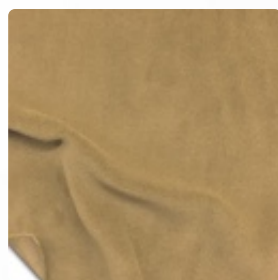
Copen Blue  
#100213



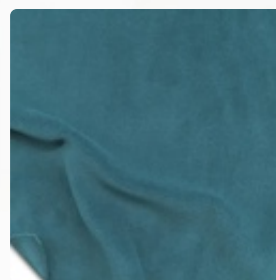
Eggplant  
#100214



Pewter  
#100215



Mocha  
#100216



Ice Blue  
#100217



Peacock  
#100218

Store Hours: Monday - Friday from 8AM - 4:30PM PST

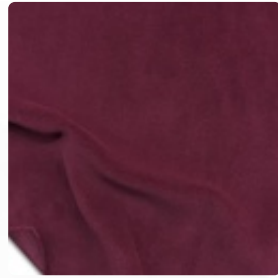


S&K Theatrical Draperies  
7313 Varna Avenue  
North Hollywood CA 91605  
United States

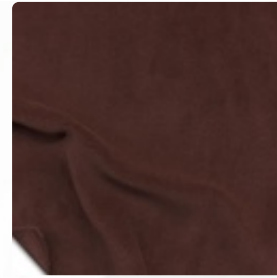
True custom solutions since 1965



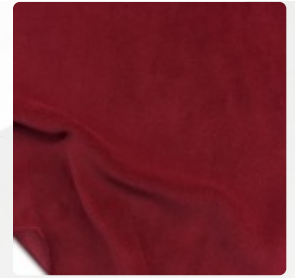
Aqua  
#100219



Ruby  
#100220



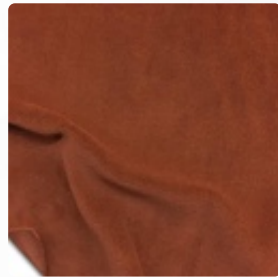
Brown  
#100221



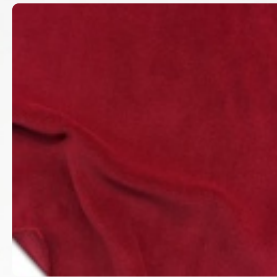
Colonial Brick  
#100222



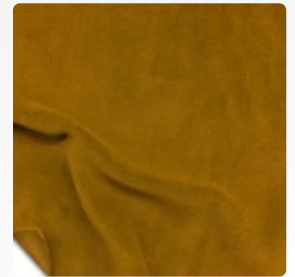
Moleskin  
#100223



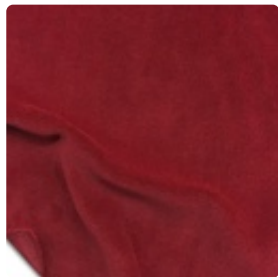
Copper  
#100224



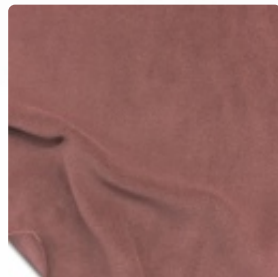
Cherry  
#100225



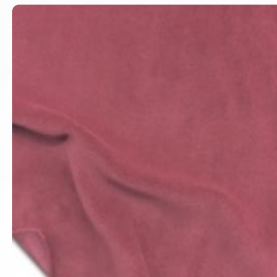
Maize  
#100226



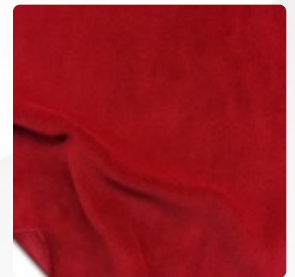
Plum  
#100227



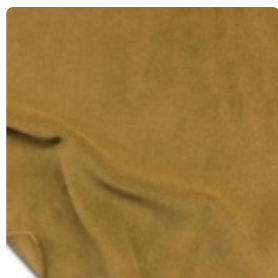
Ash Rose  
#100228



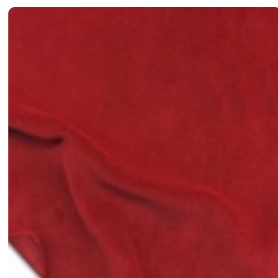
American Ash Rose  
#100229



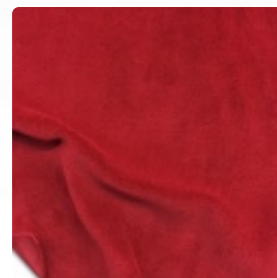
Crimson  
#100230



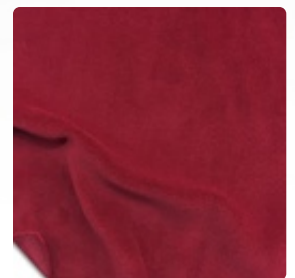
Doeskin  
#100231



Regal Red  
#100232



Persimmon  
#100233



Red  
#100234

Store Hours: Monday - Friday from 8AM - 4:30PM PST

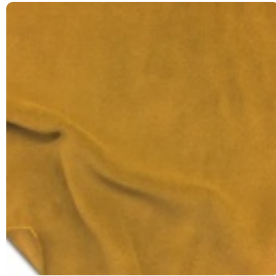


S&K Theatrical Draperies  
7313 Varna Avenue  
North Hollywood CA 91605  
United States

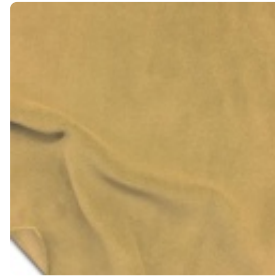
True custom solutions since 1965



Pussywillow  
#100235



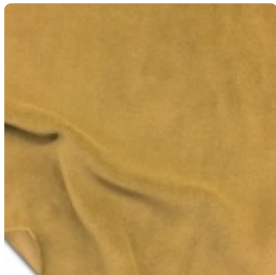
Brandy  
#100236



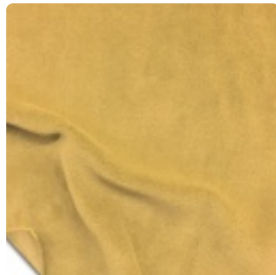
Chamois  
#100237



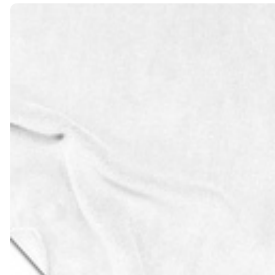
Pink  
#100238



Wheat  
#100239



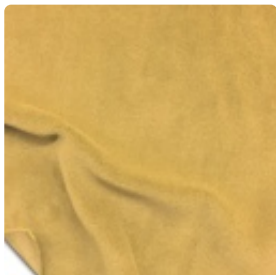
Gold  
#100240



White  
#100241



Thunder  
#105348



Storm  
#105349



---

Store Hours: Monday - Friday from 8AM - 4:30PM PST